

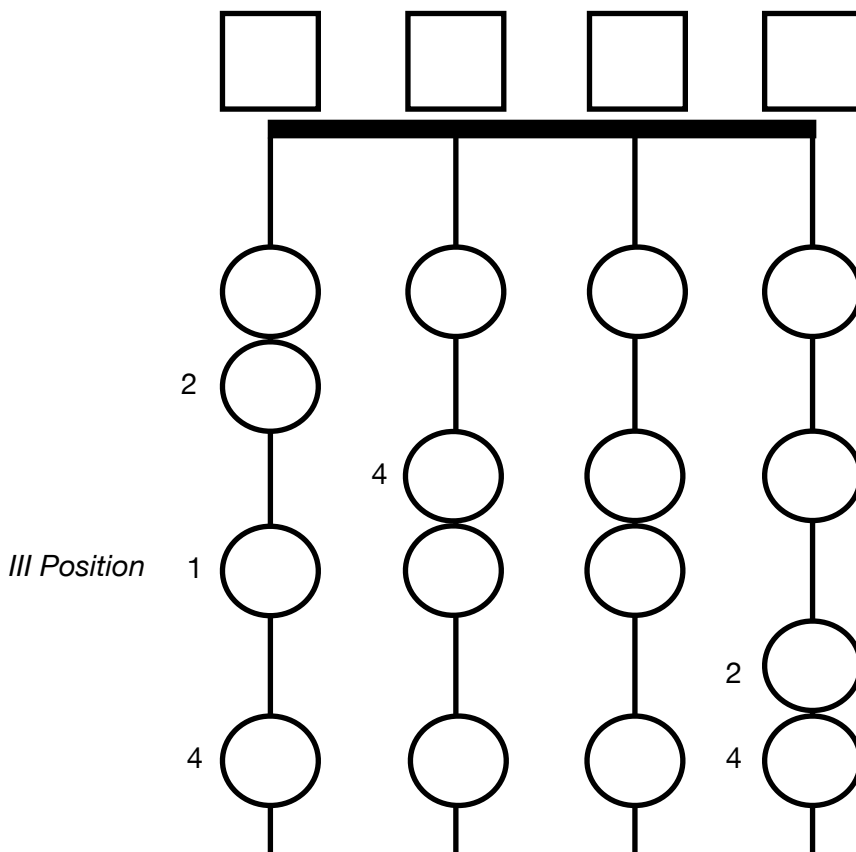
# Fingerboard Geography for Double Bass

5 note patterns in 1st and 3rd position

## Key of D Major



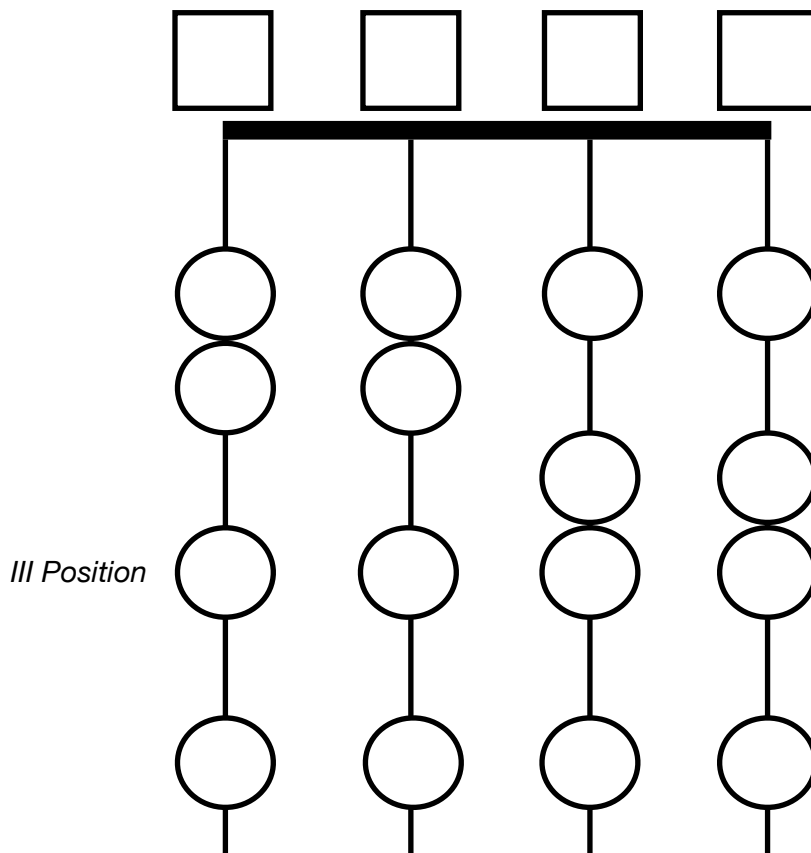
The key of D Major has 2 sharps: F# and C#.



## Key of G Major



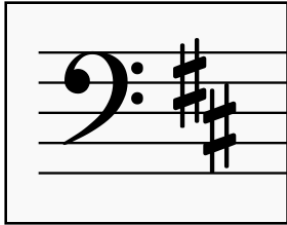
The key of G Major has 1 sharp: F#.



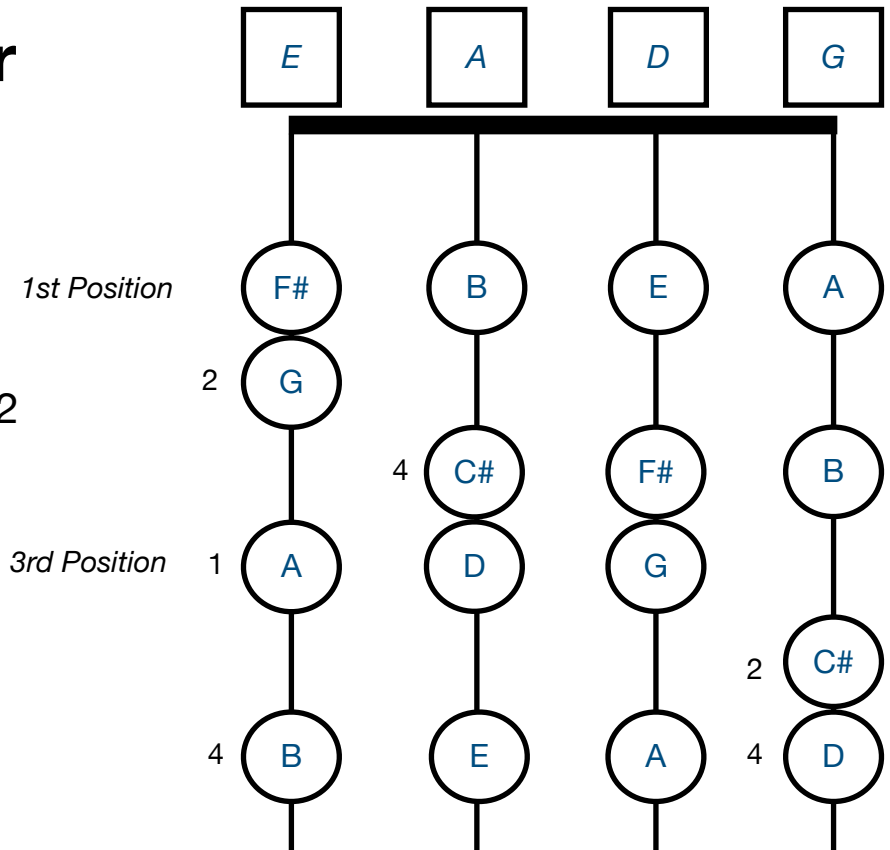
# Fingerboard Geography for Double Bass

(sample key)

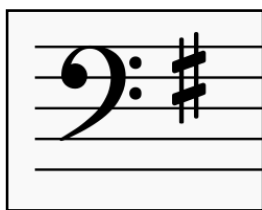
## Key of D Major



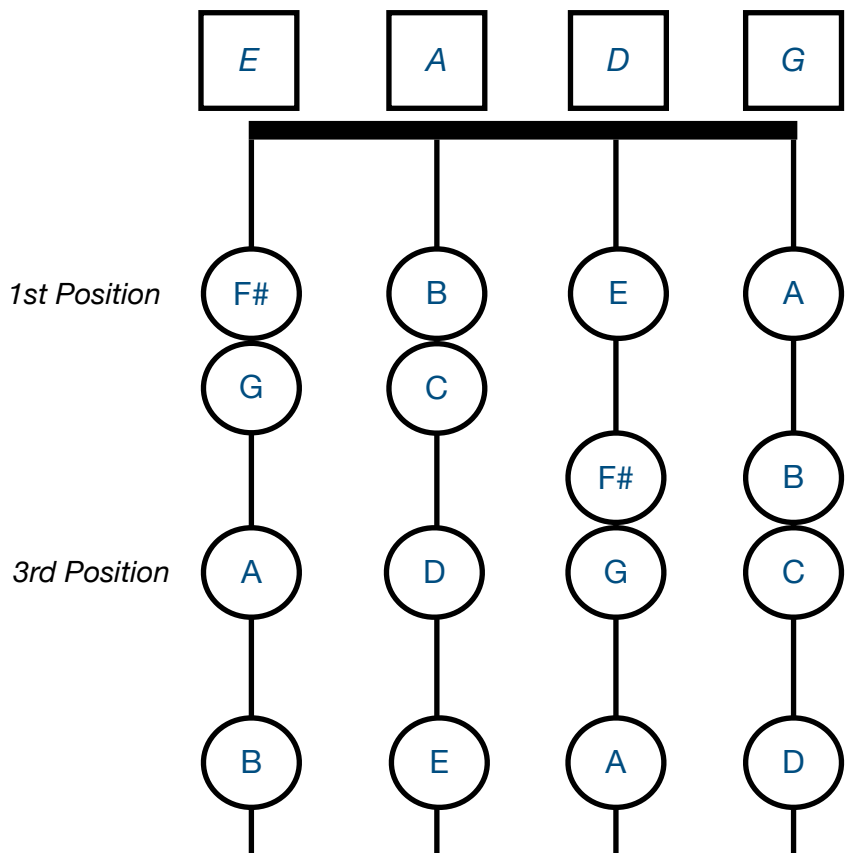
The key of D Major has 2 sharps: F# and C#.



## Key of G Major



The key of G Major has 1 sharp: F#.

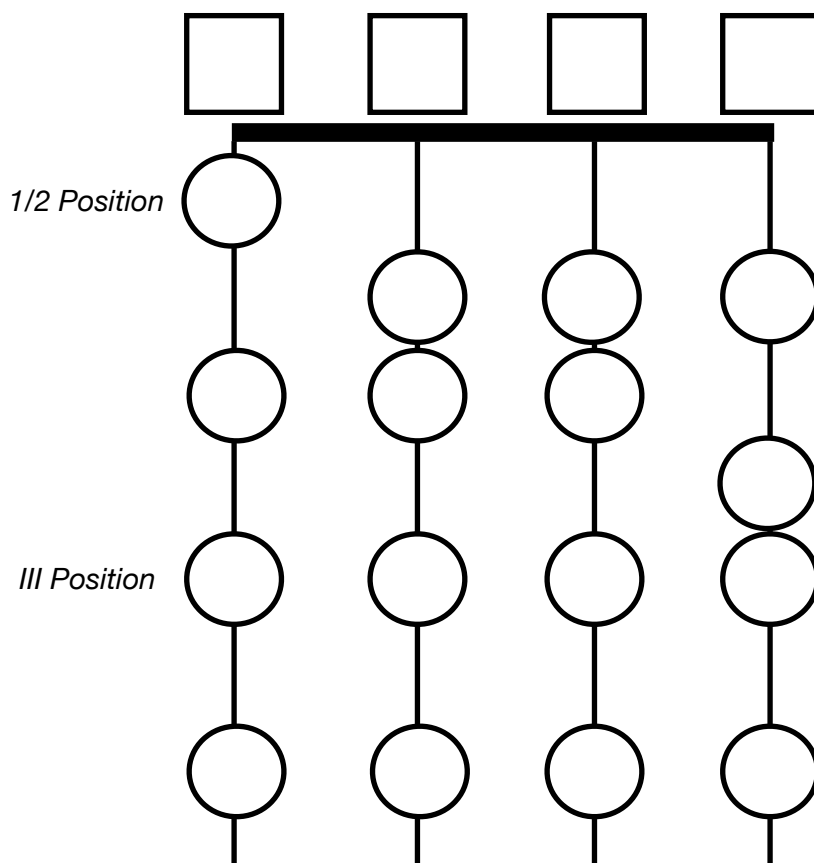


# Fingerboard Geography for Double Bass

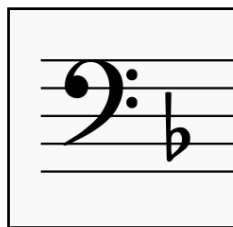
## Key of C Major



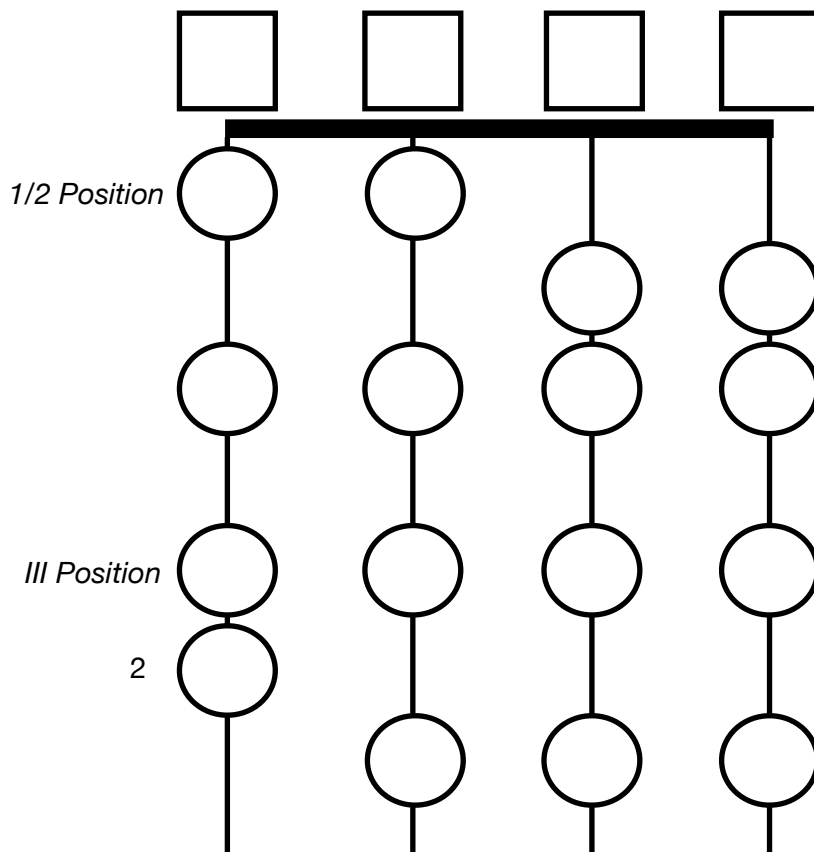
The key of C Major has no sharps or flats.



## Key of F Major

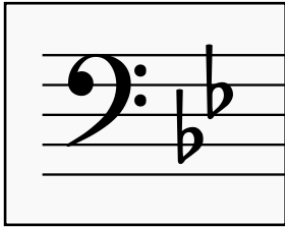


The key of F Major has 1 flat, B-flat.



# Fingerboard Geography for Double Bass

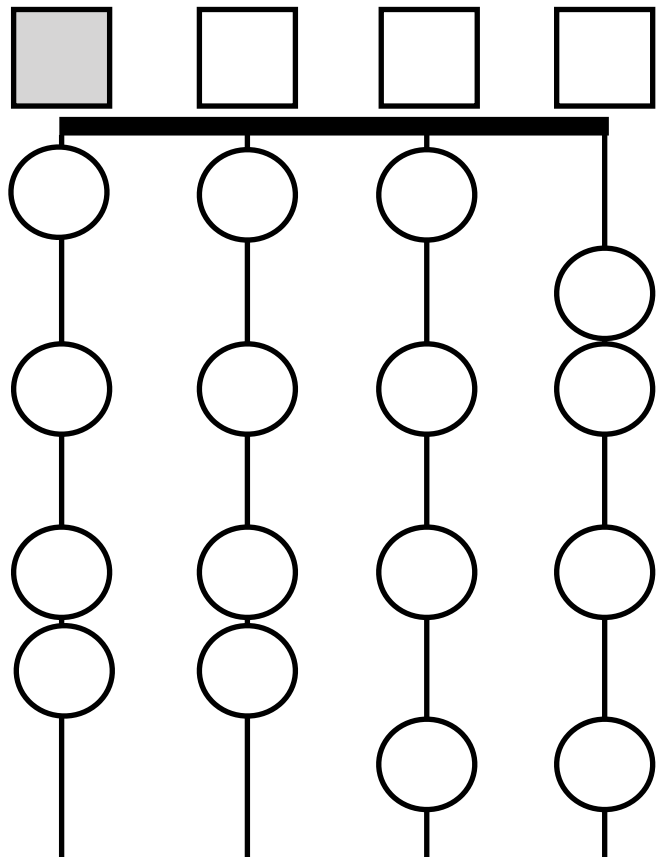
## Key of B-Flat Major



The key of B-flat Major has 2 flats: B-flat and E-flat. (*Open E-string is not allowed!*)

1/2 Position

3rd Position



## Key of A Major

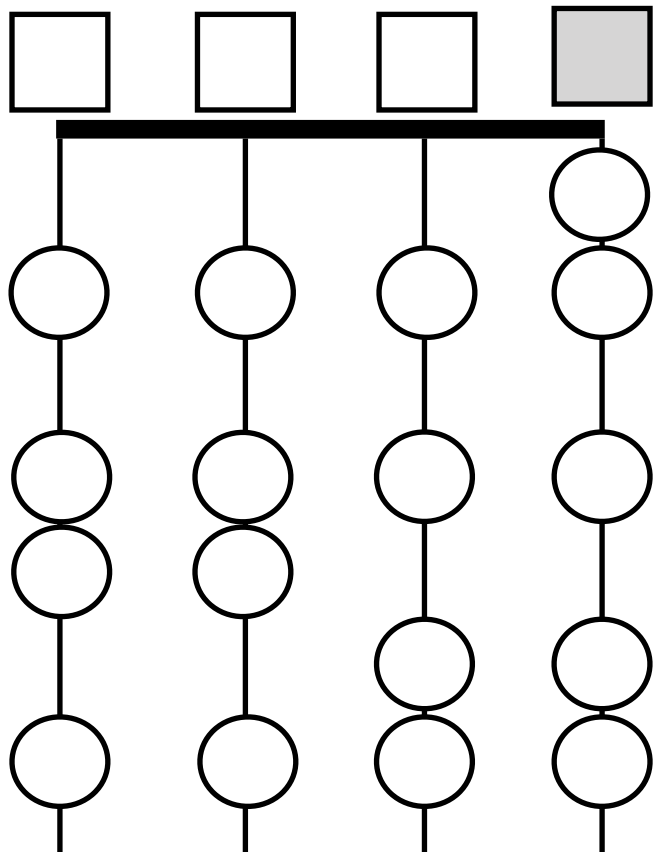


The key of A Major has 3 sharps: F#, C#, and G#.

1/2 Position

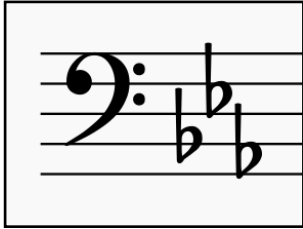
1st Position

3rd Position



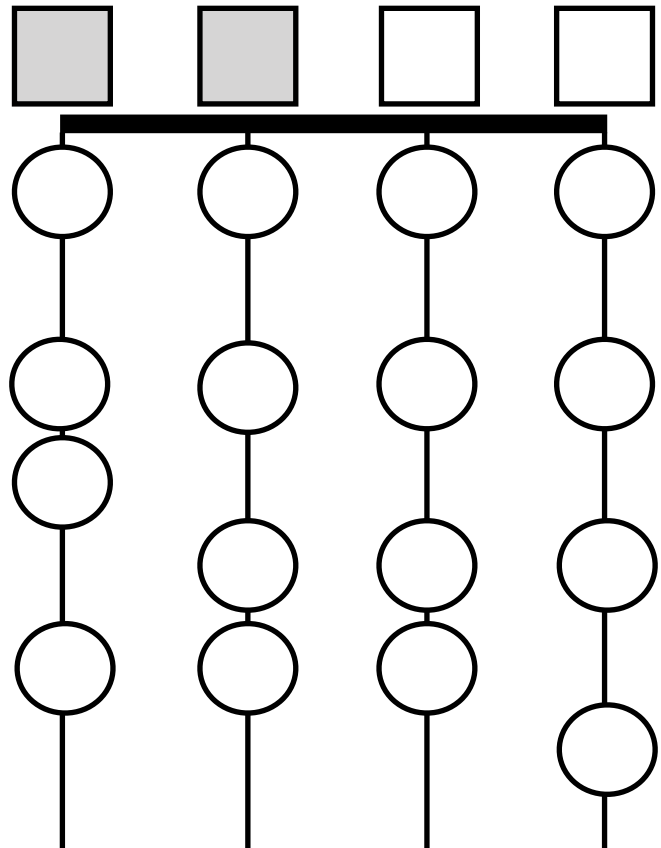
# Fingerboard Geography for Double Bass

## Key of E-flat Major

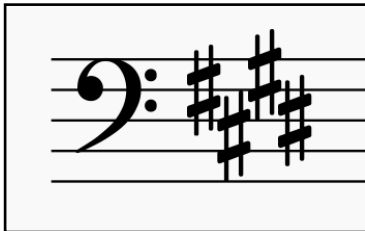


The key of E-flat Major has 3 flats: B-flat, E-flat, and A-flat. (Open E and A strings are not allowed!)

1/2 Position



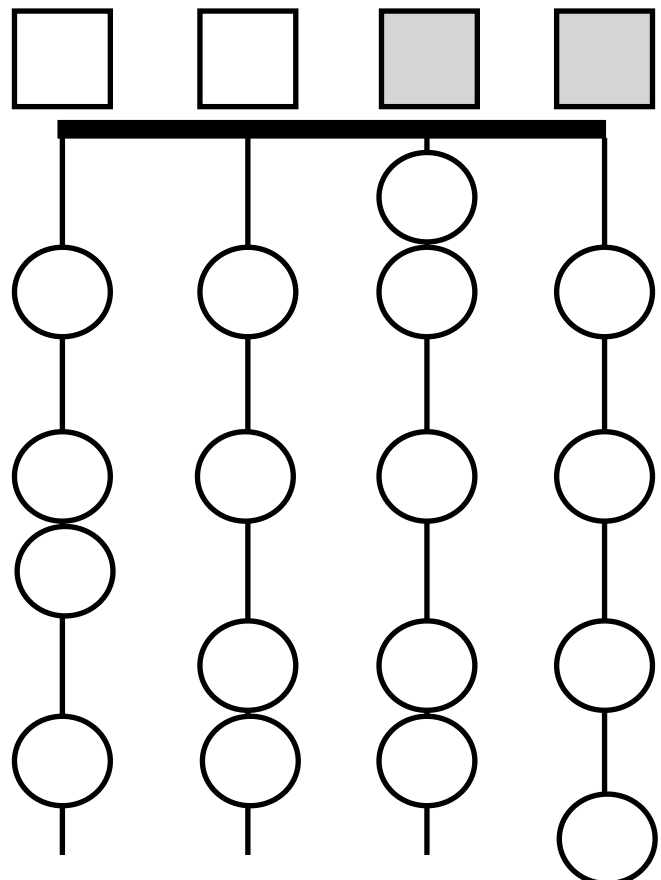
## Key of E Major



The key of E Major has 4 sharps: F#, C#, G#, and D#. (Open D- and G-strings are not allowed!)

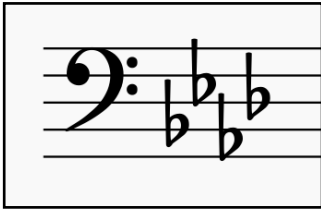
1st Position

3rd Position



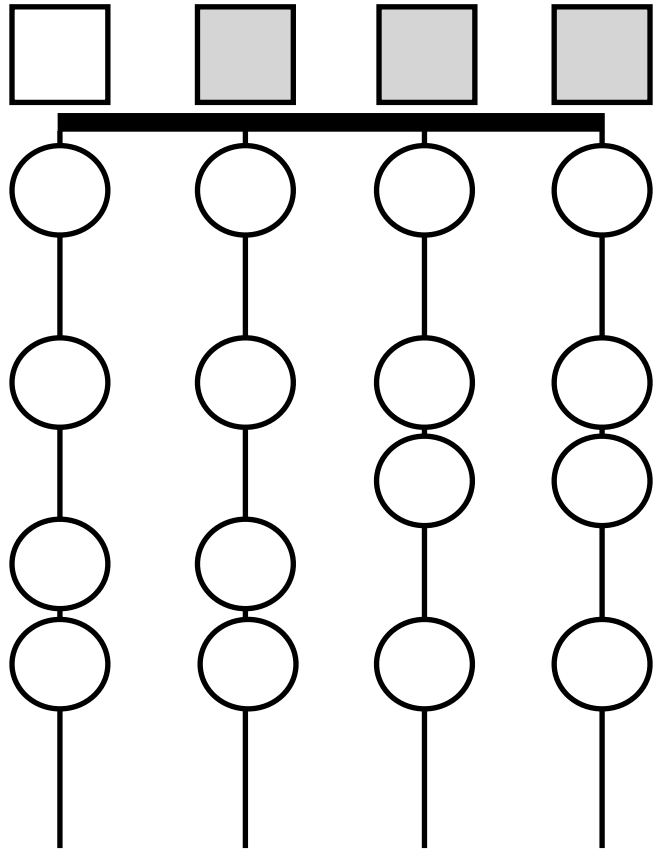
# Fingerboard Geography for Double Bass

## Key of A-Flat Major



1/2 Position

The key of A-flat Major has 4 flats: B-flat, E-flat, A-flat and D-flat. (Open E, A, and D strings are not allowed!)



## Chromatics

Fill in ALL of the notes on your fingerboard, in half-steps.

Remember the natural half-steps: E-F and B-C.

